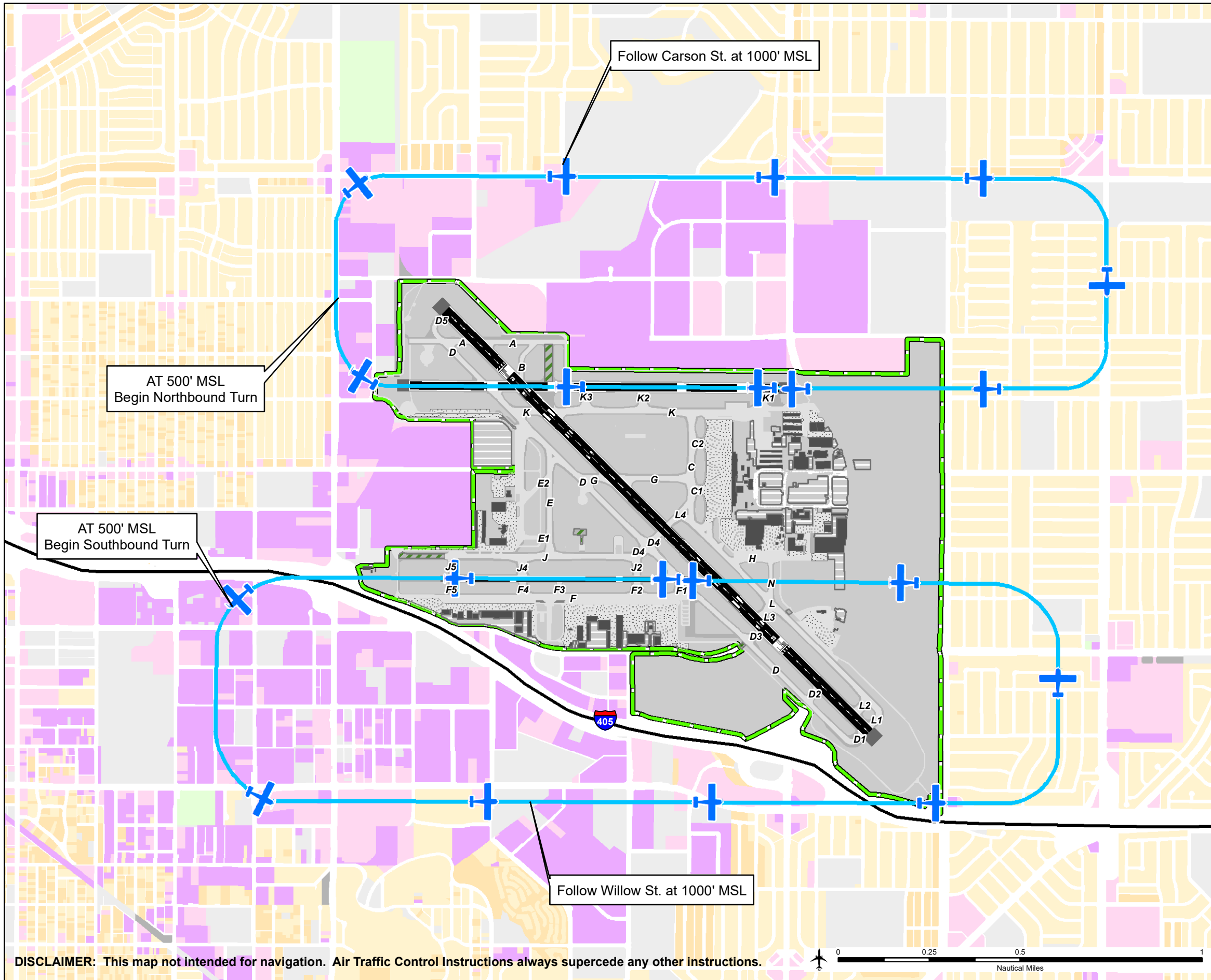


LONG BEACH AIRPORT - VOLUNTARY FLY FRIENDLY PROCEDURES

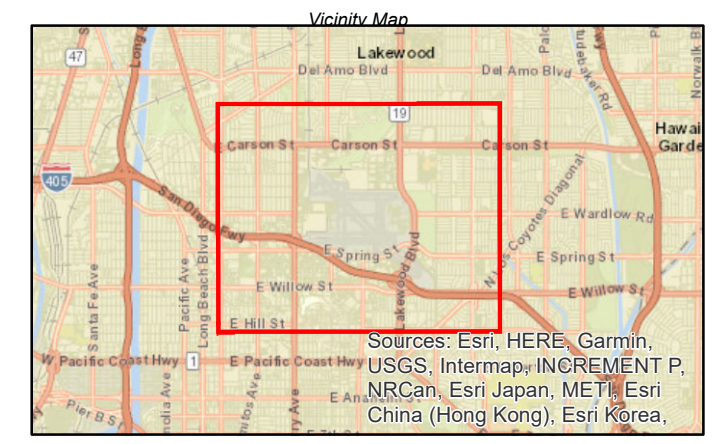


Legend

Airfield Basemap Layers	Land Use Layers	Generalized Flight Track
Taxiway Segment	Single Family Residential	Generalized Flight Track
Runway Segment	Multi Family Residential	Generalized Flight Track
Shoulder	Commercial	
Unusable Surface	Industrial	
Apron	Open Space / Recreational / Agricultural	
Generalized Airport Property Boundary	Government Owned / Airport Property	
	Highway	

HOW TO FLY FRIENDLY AT LONG BEACH AIRPORT

- ✈ Use full length of Runway, and full power on departure.
- ✈ Use Best Efforts to Maximize Climb on departure.
- ✈ Fly appropriate pattern altitudes. When able, implement crosswind turns at 500' MSL on departure.
 - Otherwise fly the upwind leg to 1000' MSL on departure before turning crosswind/downwind.
 - Limit the width of the downwind leg to no more than 1/2 to one mile from runway centerlines of Runway 08L/26R and Runway 08R/26L use visual cues
 - Aligning Downwind to Carson St., to north on Runway 08L/26R
 - Aligning Downwind to Willow St. to the south on Runway 08R/26L
- ✈ Distribute flight activity based on demand and optimize the use of both 26L and 26R as the prevailing runways to best avoid residential areas
- ✈ Adhere to all Long Beach Municipal Code (LBMC) Chapter 16.43 (Airport Noise Ordinance) regulations and Long Beach Airport recommended noise abatement procedures related to pattern and flight training.
- ✈ Reminder – Touch and Go operations are not permitted after 7 pm weekly and 3 pm on the weekends and Holidays.
- ✈ As a recommendation- No pattern work on any runway after 10 pm- including required full stop and taxi back operations.
- ✈ For any pattern work necessary after 10 pm, use a right hand pattern on the only active runway (30/12) so to mitigate impacts to residential neighborhoods
- ✈ Aircraft should try to touch down in normal touchdown zone to maximize the usable distance of the runway with appropriate flight profiles.



DISCLAIMER: This map not intended for navigation. Air Traffic Control Instructions always supercede any other instructions.

